



MONTHLY MEMBERSHIP PROGRESS REPORT

District 2 A3

Results as of: 02/28/2019

GMT: GREGORY GILLIAM

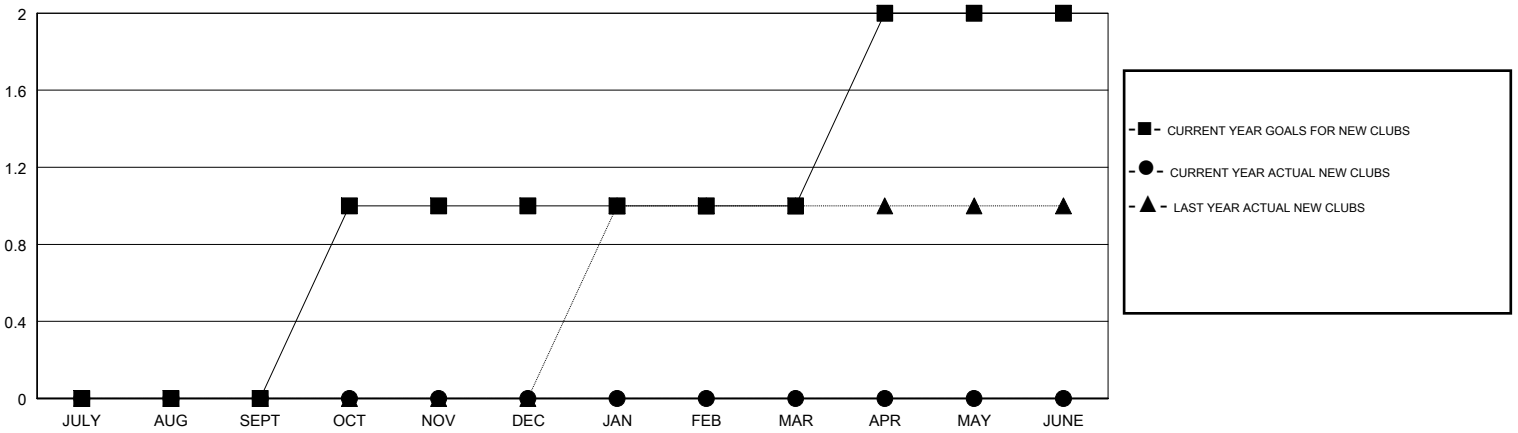
LOCATION TEXAS

GMT CA

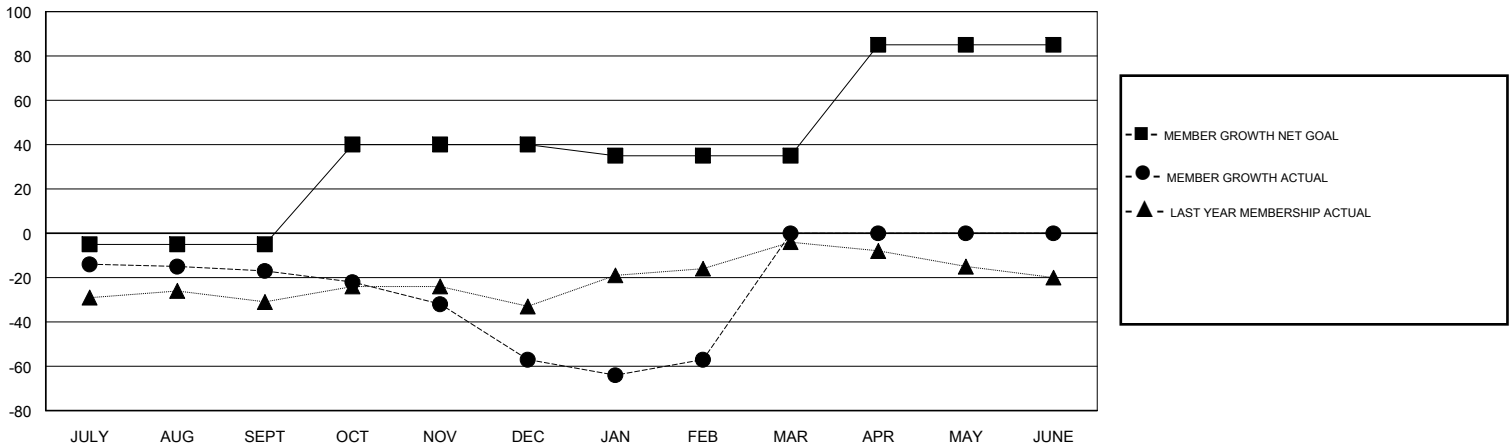
Clubs			
RESULTS FOR 2018-2019			
QUARTER	NEW CLUB GOAL	NEW CLUBS	DROPPED CLUBS
JULY/AUG/SEPT	0	0	0
OCT/NOV/DEC	1	0	0
JAN/FEB/MAR	0	0	0
APR/MAY/JUNE	1	0	0

Members			
RESULTS FOR 2018-2019			
QUARTER	MEMBER GROWTH NET GOAL	MEMBER GROWTH ACTUAL	DROPPED MEMBERS ACTUAL (including transfers)
JULY/AUG/SEPT	-5	37	48
OCT/NOV/DEC	45	26	61
JAN/FEB/MAR	-5	23	22
APR/MAY/JUNE	50	0	0

GOALS AND ACTUAL NEW CLUBS CUMULATIVE



GOALS AND ACTUAL MEMBERS CUMULATIVE



DROPPED CLUBS: 0	25 CLUBS OF 54 ADDED 1 OR MORE NEW MEMBERS	<u>GENDER DISTRIBUTION</u>	
DROPPED MEMBERS		MALE	770 (64.33%)
DECEASED	9	FEMALE	427 (35.67%)
CLUB CANCELLED	0	Women Percentage Fiscal Year Goal: 40%	
OTHER	122	TOTAL FAMILY UNIT MEMBERS	185
TOTAL	131	FAMILY MEMBERS PAYING HALF DUES	98

[CLICK HERE FOR CUMULATIVE MEMBERSHIP DATA](#)